

❖Kings River Gazzette❖

Volume 2 Issue 11

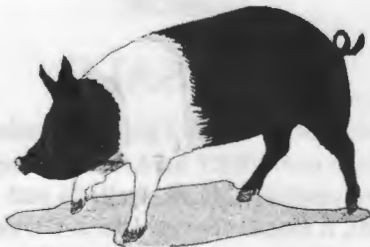
The official publication of the Kings River Regulators

Nov. 1997



NOVEMBER'S MATCH WAS NO TURKEY!

Antelope Kid and Riverdale did a bang up job. These members of the "Younger Gang", were able to come thru for us on short notice. Many thanks to them for a fine match. The weather cooperated by giving us a beautiful day. We had a few new shooters and picked up two new members.



WHOLE HOG

Well, the big event took place at the Nov match. When the smoke cleared and the lead had settled, there was no doubt about it. The KRR was stuck with that damn hog. Again!

OFFICERS:

Mayor: Snakebite 787-2943
SASS #4767 KRR #1
Sheriff: Hank 591-6056
SASS #7369 KRR #2
Banker: Jessie Montana 673-7416
SASS #8244 KRR #27
Blacksmith: Bearpaw 582-3441
SASS #7559 KRR #6
Schoolmarm: Fannie Oakley
SASS #6719 KRR #10

THANK YOU NANCY

<http://www.bestinwest.com>

In case you didn't know or had forgotten, the Kings River Regulators have a web page. It is donated and maintained by Nancy Gill. She is the better half of Jim Gill, aka. Roughcut. Nancy has been doing this for over a year now, and with little or no thanks. Well, it's about time we recognized her efforts on our behalf. There are a great many folks that surf the internet, and our page is certainly a stopping point for the CAS fans. This information media is the fastest and most far reaching available. I encourage anyone that has a business or a message to spread, to get in touch with her and explore the possibilities of a worldwide marketplace. Nancy can be reached by telephone at:

Web Wish Productions
209-325-1803

Thanks Nancy, we appreciate you.

Shooters Fee Increase

Starting in Jan 98, FRPC match fees increase. The Town Council voted to pass along this increase to the members. Starting at the January match, the new fee will be \$12 for members and \$17 for non members. This range fee increase is long overdue. I don't know of any range that has a lower fee than ours. The board of directors also voted to start charging the police and military for using the range. They have used it without charge for many years. The rate of charge for these two groups will be about half the rate charged the general public.

ELECTIONS

Election time is here. Send your nominations to the School Marm, Fannie Oakley, at 6917 Rodeo Dr., Sanger, Ca. 93657, ASAP. All nominees will be contacted to see if they will run. Please get involved in this process. We have a lot of talent on-board. Don't be timid about running for office. Win or lose, we are a team. This is not a popularity contest, and you must be a Town Council member to run. All positions require more than a "One day a month" attitude. The term is two years.

The offices and duties are as follows:

1. School Marm: Sees to it that all shooters are registered, takes minutes at meetings, handles correspondence, co-edits and distributes newsletter.
2. Blacksmith: Sees to it that targets, props, and facilities are maintained, and/or manufactured. Leads work parties.
3. Banker: Sees to it that fees are collected, receives monies, maintains bank accounts, co-signs checks, pays bills, handles IRS paperwork.
4. Sheriff: Sees to it that the match takes place, appoints match directors and deputies, enforces club regulations and safety rules, stands in for the mayor when absent. (deputies tour ends with elections)
5. Mayor: Sees to it that all things that are supposed to happen, happen. Co-signs checks, guides the club in setting and achieving goals, makes sure the club is represented on the FRPC board of directors, promotes the KRR, sees to it that the club newsletter is published, is the contact person for SASS and the official voice for the KRR.



Cowboy Chatter

1) We're looking into possible ways to expand our shooting area. We're looking at the area behind bay three where there might be enough room to add a few bays, AND arrange a Hogans' Alley too! The Town Council gave the officers the go-ahead to do it if approved by the FRPC board, and if we have the money! We're checking it out.

2) There were KUDOS and atta-boys at the FRPC board of directors meeting regarding our annual match. Tracy said it was one of the best matches that he had seen at this range and was especially glad to see the turnout we had on our work days. Thanks to all of you for the GREAT teamwork.

3) It's time to pay your membership dues for 1998. REMEMBER, the dues are effective the LAST day of the month in which they were paid. To avoid paying a non-member shooting fee, get-em-in NOW! \$20 each, max of \$40/family. Why not join FRPC too!

4) BOY HOWDY! You shoulda seen Tuttie-frutti shootin that pair of Vaqueeros (Beasleys) on stage two. He couldn't miss.

5) Bearpaw is going to make us some more of those fine, folding loading tables. They sure work great!

6) Hoss, the Sheriff of Five Dogs, said the December match will be a dandy, with plenty of shootin. If you hain't been ta Five Dogs, come on down. There will be a gift exchange, if yer a mind to join in.

7) We have a group going to Stampede. If you want in, you need to hurry. Call Jessie.

The Outlaw Trail

A whispered, unmapped route from Old Mexico to Canada was used by many known and unknown men from 1870 to 1910 to escape the law and other encumbrances of society. This was a track a "wanted man" or anyone with a past could follow and find sanctuary among the fiercely independent occupants of a wild land. It was called the "Outlaw Trail".

The Outlaw Trail started North from El Paso and followed a path that was as diverse as the West itself. From the deserts of the Southwest to the high mountain passes of Wyoming it connected such notorious places as Robbers Roost, Brown's Park, South Pass, Atlantic City, and Hole-in-the-Wall. North of Wyoming it continued through Miles City and Landusky Montana before reaching Canada.

There is a lot of history that has taken place on or close to this dusty horse trail. The names scream history, heritage, and a hell-for-sure time: The Wild Bunch, Tom Horn, Nate Champion, Isom Dart, The Sundance Kid, Calamity Jane, Etta Place, Joe Lefors, and Charlie Siringo. John Browning had his first gun shop in South Pass City and Buffalo Bill Cody rode for the Pony Express from here. The Johnston County War also took place here.

How safe was a wanted man on the Outlaw Trail? It is reasonably well documented that Butch Cassidy was not killed in Bolivia in 1908 but came back to the United States and hid out on the "Trail" until his death in 1938. Several people who knew Butch from the early years have stated that they saw him in the 1920's in Utah and Wyoming including an old girl friend, Josephine Bassett Morris.

FLATIRON

Quote of the month

"I was gratified to be able to answer promptly, and I did. I said, I didn't know." Mark Twain



GRAB YER WEENIES

The club purchased a Hot Dog cooker. Yosemite Ma'am and Miss Kitty agreed to give us a hand and boy did they deliver. They had hot coffee, cocoa, and muffins the morning of the shoot, with hot dogs, Polish, chips and soft drinks available for lunch. Buckskin and Longbranch are going to build us a cook shack and a registration shack. I don't know exactly when the erection will be, but I'm sure it will be soon. All the things necessary to put on the match will be in this building. The job of signing up shooters and entering scores will be spread around some, so that more than one person knows how to do things, and no one gets BURNED OUT! We owe a real debt of thanks to our non-shooting members. They are the ones that put the icing on the cake! PLAN ON JOINING US FOR BOTH BREAKFAST AND LUNCH!

FOR SALE

Rossi mule eared 12 ga side-by-side coach gun. VERY hard to find. excellent condition, tuned, shells fly out! O hell, it sounds so good I think I'll keep it. SnakeBite

Long Range

How would you like to do some for real long range shootin? What if we started a splinter group of long range buffalo shooters? We could hold our matches over the hill where the "BIG BOYS" shoot. Think about it and talk it up. This might work into a two day thing, with long range on Sat, and CAS on Sun. The idea won't work without enough interest and folks to make it work. I wouldn't want to take away from the KRR, but the right person could make it go.

MATCH			< STAGE 1 >		< STAGE 2 >		< STAGE 3 >		< STAGE 4 >		<-- TOTALS -->	
FINAL ALIAS	CLASS		TIME	RNK	TIME	RNK	TIME	RNK	TIME	RNK	TIME	PNTS
=====	=====	=====	=====	=====	=====	=====	=====	=====	=====	=====	=====	=====
1. CHARLIE ONE HORSE	#12527	T	38.34	1	63.80	1	51.05	1	67.24	6	220.43	9
2. NO NAME	#12166	T	54.55	4	71.28	2	62.47	9	63.86	2	252.16	17
3. SNAKEBITE	# 4767	T	58.80	6	77.77	4	54.00	2	69.21	9	259.78	21
4. BULL DOG	#**002	T	47.39	2	92.29	10	60.09	7	64.70	3	264.47	22
5. FRED BURNHAM	#12168	T	59.31	7	97.03	12	56.68	4	56.03	1	269.05	24
6. SHADOW	# 3293	T	58.48	5	97.05	13	54.61	3	66.46	4	276.60	25
7. DEPUTY DOG	# 6716	T	49.20	3	71.86	3	75.56	19	66.58	5	263.20	30
8. LONGBRANCH	#12433	T	65.35	10	81.51	5	68.29	11	73.53	12	288.68	38
9. SAM LUIS	#12788	T	68.33	11	81.62	6	61.51	8	75.03	14	286.49	39
10. MESCALERO	#**011	T	60.45	8	89.76	8	63.22	10	75.72	16	289.15	42
11. COLE CHANCE	# 8243	T	63.55	9	91.06	9	73.78	17	67.63	7	296.02	42
12. HAWKEYE O'RILEY	# 6443	T	76.71	19	96.87	11	69.50	13	70.30	10	313.38	53
13. HANK	# 7369	D	76.04	18	97.68	14	59.40	5	80.55	18	313.67	55
14. DEL RIO	#**006	T	82.47	25	97.79	15	71.33	14	68.09	8	319.68	62
15. JESSIE MONTANA	# 8244	W	78.95	21	101.71	19	59.59	6	81.65	19	321.90	65
16. SHILOH	#**014	T	70.60	15	105.59	23	82.66	25	72.65	11	331.50	74
17. ROUGH CUT	# 8464	T	70.30	14	100.90	18	81.89	23	89.68	24	342.77	79
18. JOAQUIN RIVERS	#11912	T	80.77	23	104.21	20	83.52	28	75.34	15	343.84	86
19. REV. BUSTER DOORS	#**012	D	74.47	16	106.31	25	76.28	20	92.93	27	349.99	88
20. HOSS	# 9565	D	88.92	34	100.31	17	82.29	24	78.70	17	350.22	92
21. HONDO LANE	#**008	T	87.36	31	98.86	16	83.14	26	86.09	20	355.45	93
22. TERRIBLE TED	# 9014	S	75.20	17	116.70	29	101.22	41	74.77	13	367.89	100
23. GEEZER	#11911	T	80.20	22	105.35	22	87.74	32	89.96	25	363.25	101
24. LEADFOOT	# 5535	T	84.11	27	105.34	21	87.91	33	91.75	26	369.11	107
25. SLO HANK DAVIDSON	#**015	T	80.86	24	127.85	36	72.41	15	99.29	34	380.41	109
26. COALINGA KID	#13954	M	83.04	26	108.97	26	87.26	31	94.39	28	373.66	111
27. FLATIRON	# 7983	T	98.18	39	123.39	31	74.40	18	89.04	23	385.01	111
28. BEAN POT	# 6964	M	87.00	29	106.21	24	85.13	30	98.28	33	376.62	116
29. MATT A HORN	#**010	T	86.85	28	87.24	7	101.01	40	115.77	42	390.87	117
30. ANTELOPE KID	#**001	M	87.12	30	138.84	41	73.07	16	97.92	32	396.95	119
31. BUCKSKIN	#12434	S	69.22	12	126.55	32	110.61	45	95.56	30	401.94	119
32. EL GATO	#**007	T	69.80	13	112.49	27	93.82	36	131.72	46	407.83	122
33. TOELESS JOE	# 8608	S	94.50	37	126.74	33	89.00	34	86.71	21	396.95	125
34. WIDOWMAKER	# 8970	M	102.40	42	135.32	40	83.27	27	87.31	22	408.30	131
35. DUTCH PEPPER	#**005	J	101.03	41	146.19	43	69.21	12	104.17	37	420.60	133
36. THREE FINGERS RED	# 9218	D	91.19	35	129.48	37	90.19	35	104.04	36	414.90	143
37. RUTHLESS. RUTH	# 9015	W	88.53	32	140.90	42	98.98	38	97.18	31	425.59	143
38. WOODROW	#**018	S	108.59	47	130.81	38	78.02	21	104.78	38	422.20	144
39. COAL TRAIN	#**004	T	108.96	48	157.95	46	79.07	22	95.12	29	441.10	145
40. WORTHLESS CHEATIN	#12713	T	77.47	20	126.97	34	126.90	50	115.75	41	447.09	145
41. SQUARE SHOOTER	# 9417	T	100.47	40	114.77	28	98.05	37	129.37	44	442.66	149
42. LONG FEATHER	# 8574	T	105.26	45	116.82	30	84.74	29	131.81	47	438.63	151
43. CHEROKEE	#**003	T	104.77	44	130.96	39	129.44	51	99.98	35	465.15	169
44. SHORTY	#12810	M	92.58	36	127.37	35	115.34	47	149.79	53	485.08	171
45. ROT GUT CHARLIE	#13304	T	117.00	51	148.30	44	100.80	39	112.47	39	478.57	173
46. RED HALL	#**013	T	88.60	33	178.20	51	122.90	49	118.37	43	508.07	176
47. PLAINS DRIFTER	#13713	T	97.43	38	151.64	45	110.06	44	139.76	50	498.89	177
48. MADERA DAVE	# 7446	D	106.90	46	188.00	52	109.53	42	113.34	40	517.77	180
49. TEQUILLA JOE	#**016	M	113.66	50	158.96	47	109.78	43	131.66	45	514.06	185
50. BEARPAW	# 7559	S	104.44	43	163.60	48	137.50	53	136.20	49	541.74	193
51. WIDOWTAKER	#**017	M	121.82	52	172.68	49	120.37	48	135.60	48	550.47	197
52. WIND DANCER	# 8576	W	109.85	49	174.84	50	135.79	52	142.10	51	562.58	202
53. HALF PINT	#**009	W	133.86	53	199.94	53	111.55	46	147.14	52	592.49	204